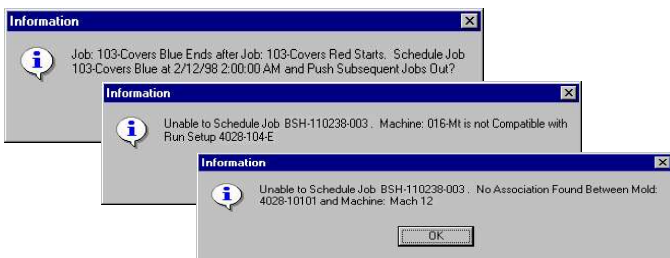
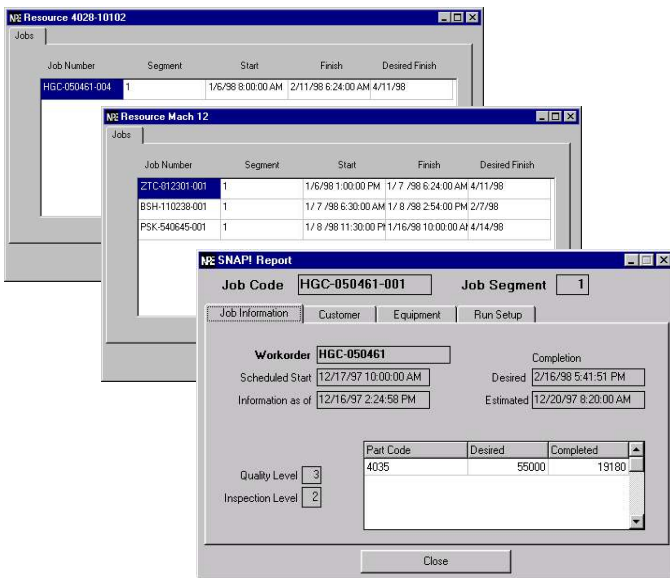
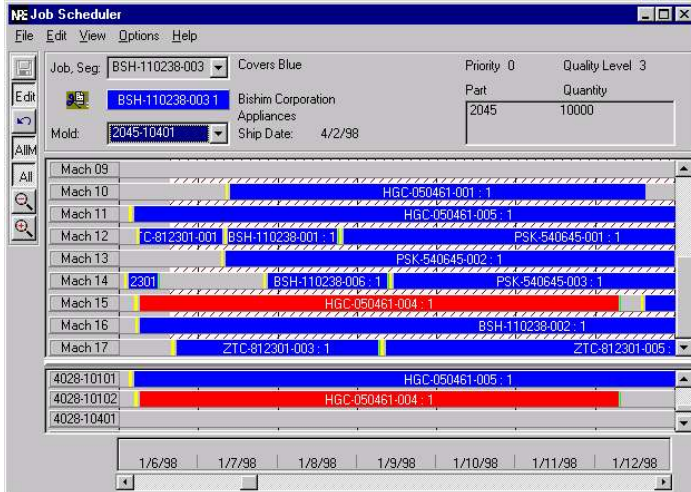


Creating the optimum schedule is of primary importance to the efficient operation of a plant and the goal of every production manager. The most effective and easy-to-use tools are required to meet this objective. The FullMetrics scheduler was designed to provide the tools needed to create an optimized schedule and provide the flexibility to deal with real-world situations.



- Intuitive, graphical interface.
- Adjustable split-view window, displays machine schedule on top and mold schedule below.
- Powerful editing tools allow the user to experiment with 'what-if' scenarios before actually modifying an existing schedule. Try many different logical scheduling solutions to arrive at the most optimum and then save to pass it to the floor.
- Scheduled jobs are graphically represented with color coded bars. Bar length indicates job run time and is automatically calculated and updated to reflect changes. Job color indicates if the job will be completed on time. Colored sections at beginning and end of job bar represent setup, stabilization, knockdown, and other real-world time requirements that should be accounted for.
- Unscheduled jobs can be sorted by priority, desired completion date, ship date, or job code. Know exactly which jobs really need to be completed next and improve planning on a macro scale.
- Schedule jobs using drag-and-drop functionality, enter specific start times or schedule JIT.
- Allows unlimited number of jobs scheduled per machine.
- "Show Only/Show All" - By default, when a new job is selected to be scheduled, only tracks for the machines and molds that will accommodate that job will be presented for scheduling the job. This limits the chance of making a scheduling error and avoids forcing the user to search for the correct resources in the schedule area. By clicking the "All" button, the user may view the schedule of all machines and molds simultaneously, gaining an overall picture of the schedule.
- The Scheduler graphically indicates when the currently selected mold is already scheduled and therefore not available. This is indicated by the white and red line shading in the background.
- Powerful Interrupt feature [scissors button] allows any scheduled job, including currently running jobs, to be segmented. Any incomplete production is automatically regenerated as another job segment and placed into the job queue for scheduling. The system will not hinder you when dealing with real-world, emergency production runs or scenarios.
- Right click any machine or mold time-line title to view that specific resource's queue of jobs.
- Right-click any job to display the Snap Report for that job, immediately getting updated production and job status information from the plant floor.
- Schedule supports multi-shape, multi-cavity molds (family molds) and reflects changes to job status and completion time due to cavitation changes made at the press.
- Four zoom levels. Magnify to a single day across the entire window, one week, one month, or a three months period. Always able to scroll forward or backward past view setting range to view any point in the schedule.
- Schedule verifies estimated production uptime with the Plant Calendar. Job completion time is calculated to accurately reflect production according to when plant shifts are active.
- When a job is scheduled, required resources are verified for compatibility and scheduling conflicts.
- When obvious or underlying scheduling conflicts are encountered, they are presented to