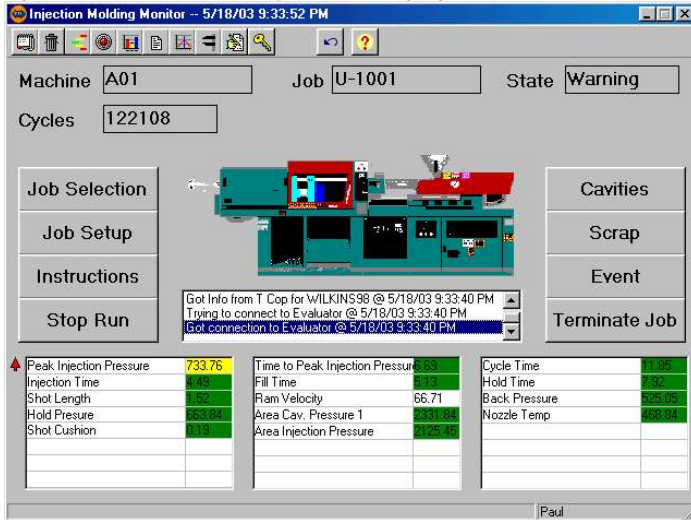


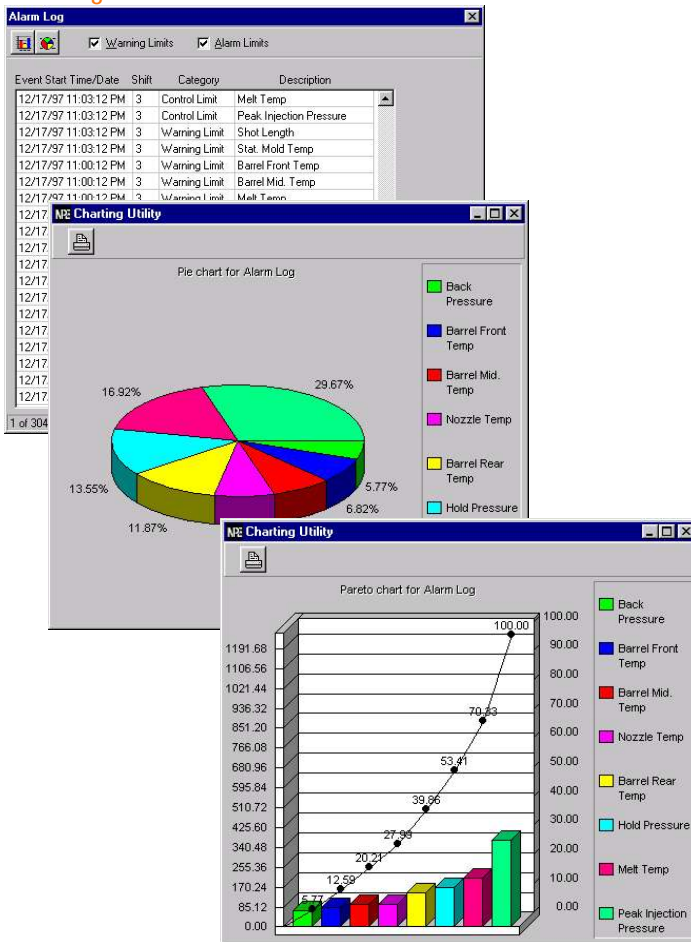
Proper execution at the press is a necessity for efficient production and requires the delivery and access of as much real-time information as possible. The Operator Interface provides this information and also acts as a comprehensive entry point for production data, such as DT & Scrap, SQC measurements, parameter changes, mold cavity changes, machine and job status, and much more.

Operator Interface (Molding Monitor Display)



- Real-time monitoring and display of parameter values.
- Parameter values are highlighted with the appropriate color code to indicate conformity to warning and alarm limits.
- Operator has instant access to numerous instruction documents assigned to the run setup for the current job. Provide paperless setup documents, assist in ISO/QS compliance.
- Operator can view the job queue for the machine, allowing advanced preparation. When the operator selects the next job to be run from this queue, all run setup information for that job is transferred to this screen.
- Any time the operator stops the job the program will request a downtime reason, assuring more complete tracking of plant operation and performance. Operator may select from user-defined downtime codes and categories.
- The number of active cavities in the mold can be changed on the fly, independently for each part in the mold. This change will be reflected in calculations for job completion time in the schedule and in mold efficiency reports.
- Scrap quantities and reason codes can be quickly and easily entered directly from the operator interface. This entry is automatically data & time stamped with the machine and job identifiers as well. The user may also enter a text description for more detail.

Alarm Log and Charts



- The operator uses the Event button to enter Downtime codes, QC Hold events, Operator Assistance codes, Operator Login, or simply to enter any pertinent notes
- Activate the Event Log to view all non-parameter events that have occurred for the current job. Events include Downtime, Start and Terminate Production, Operator Login, QC Hold, and others. Filter data for log and pie and pareto charts.
- Display the Scrap Log to view all occurrences of scrap for the current run. Filter data for log and pie and pareto charts. Find the most frequent scrap reason.
- Activate the Alarm Log to view all recorded occurrences of parameters being out of tolerance. Filter data for display in log and pie and pareto charts.
- Quickly view the Parameter window to confirm or edit nominal and tolerance settings. Allows optimization of the run on the fly or to respond to changes in operating conditions. The original authorized run setup is left untouched.
- Activate the Trend Display to view up to four different parameter's graphs simultaneously.
- Direct access to the Snap Report giving you summarized production information for the current job and for each part (family molds).
- Fast access to real-time SPC window. Includes X-bar, Range, and Distribution graphs. Also includes a spreadsheet of all shot samples with the ability to selectively take out flyers from SPC calculation. See the SPC Feature Sheet.
- The SQC button instantly displays the current part's measurement set and the operator is prompted to select the shots to correlate measurements with. Use any serial input measuring device to quickly enter data. See SQC Feature Sheet.
- The DT Editor allows the operator to edit any downtime event previously or automatically recorded.
- The Operator Interface is designed for easy touch-screen control for the operator.