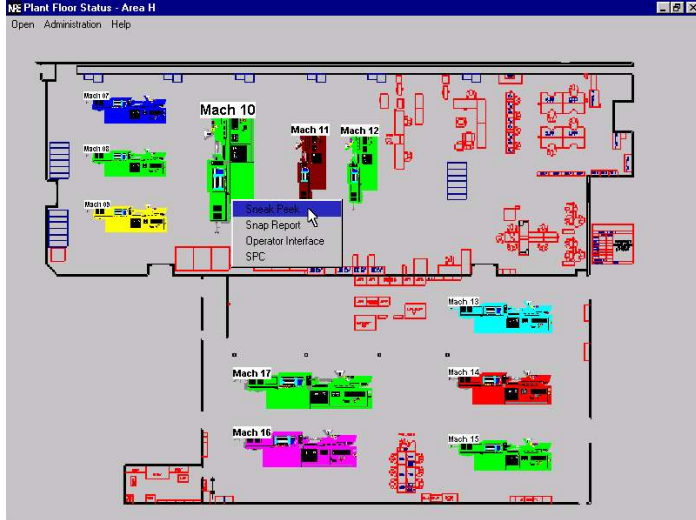


Real-time information is critical to managing plant production. Knowing exactly when and where problems are occurring can help reduce or avoid costly downtime and equipment damage. The FullMetrics Plant Floor Display gives you the plant-wide, real-time information needed to quickly respond to production, process, and operator assistance requirements.

Plant Floor Display



- View plant-wide status using either the Plant Floor Display or the Production Summary Display. Instantly toggle between the two at any time, gain direct access to any machine's specific information. Go instantly from macro to micro.
- The Plant Floor Display is a graphical representation of the plant floor, showing machine icons and your own map of the floor. Changes in machine color indicate changes in machine status as they occur in real-time.
- The Production Summary Display is an up-to-the-minute, spreadsheet-style view of plant production. Each machine in the display is color-highlighted to indicate machine production status.
- Right-click any machine in the Plant Floor Display to select from a menu of specific information regarding that machine. Go to Snap Report, Operator Interface, Sneak Peak, or SPC. From the Production Summary Display, select a machine and click one of the speed buttons at the top of the window.
- Snap Report - Get current production information for any job running on any machine. Production tracked and reported for each part being made (family molds).
- Operator Interface - This is the actual interface displayed at the press. Access all of the machine information and analysis tools available to the operator. With this capability, any machine's data can be viewed from any networked computer.
- Machine icons can be positioned, re-sized, and oriented in any way to accurately reflect the plant floor layout.

Production Summary Display

Machine	Job	Tool	Parts	Finished	Remaining	Start	Completion
Mach 26	WPE 4035 26	4035 11226	4035	1311468	911468	1/6/98 10:30:00 AM	1/10/98 9:11:4
Mach 27	WPE 4035 27	4035 11227	4035	1311444	911444	1/6/98 9:45:00 AM	1/10/98 8:26:3
Mach 28	WPE 4035 28	4035 11228	4035	1311456	911456	1/6/98 10:30:00 AM	1/10/98 9:11:4
Mach 29	WPE 4035 29	4035 11229	4035	1311420	911420	1/6/98 9:45:00 AM	1/10/98 8:26:3
Mach 30	WPE 4035 30	4035 11230	4035	1397604	997604	1/6/98 10:30:00 AM	1/10/98 9:11:4
Mach 31	WPE 3125 31	3125 10631	3125	698766	298766	1/6/98 12:30:00 PM	1/15/98 3:02:4
Mach 32	WPE 3125 32	3125 10632	3125	698784	298784	1/6/98 11:30:00 AM	1/15/98 2:02:3
Mach 33	WPE 3125 33	3125 10633	3125	698712	298712	1/6/98 12:15:00 PM	1/15/98 2:47:4
Mach 34	WPE 3125 34	3125 10634	3125	6254	98746	1/7/98 10:10:51 AM	3/18/98 6:16:4
Mach 35	WPE 3125 35	3125 10635	3125	1236	398764	1/7/98 10:10:59 AM	3/18/98 6:16:4
Mach 36	WPE 3125 36	3125 10636	3125	1110	398890	1/7/98 10:11:06 AM	3/18/98 6:16:4
Mach 37	WPE 3125 37	3125 10637	3125	1104	398896	1/7/98 10:11:13 AM	3/18/98 6:16:4
Mach 38	WPE 3125 38	3125 10638	3125	114	399886	1/7/98 10:11:20 AM	3/18/98 6:16:4
Mach 39	WPE 3125 39	3125 10639	3125	0	400000	1/7/98 10:11:28 AM	3/18/98 6:16:4
Mach 40	WPE 3125 40	3125 10640	3125	0	400000	1/7/98 10:11:35 AM	3/18/98 6:16:4
Mach 41	WPE 3025 41	3025 10241	3025	0	400000	1/7/98 10:11:41 AM	4/7/98 4:48:00
Mach 42	WPE 3025 42	3025 10242	3025	0	400000	1/7/98 10:11:48 AM	4/7/98 4:48:00
Mach 43	WPE 3025 43	3025 10243	3025	0	400000	1/7/98 10:11:56 AM	4/7/98 4:48:00

- Define an unlimited number of Plant Floor Views. Each view can contain a different set of machines, different status icons, and a different floor background.
- The Plant Floor Display window can be minimized or re-sized. Work on other programs while still keeping an eye on plant status.

Sneak Peek

- Real-time trend bars of all monitored parameters for the selected machine, in one simple window. Color coded bars indicate where the sample fell relative to tolerance settings.
- Auto-Notification - When this feature is activated, Sneak Peek will automatically come to the front when any parameter measures past tolerances. Set notification independently for warnings and alarms.
- Right-click any parameter to display trend graph. View how far from nominal real-time measurements are occurring.
- Trend graph includes markers for nominal value, warning tolerance, and alarm tolerance.

Custom Icon Setup

- Utilize custom made bitmaps from other programs (CAD/CAM) to represent the plant floor and machine icons.
- Nine different machine status boxes are provided for comprehensive and flexible representation of different machine states.
- Each Plant Floor View can be independently set up with a different plant floor background and machine icons.
- When the machine icons appear in the Plant Floor Display, their user-defined names are automatically superimposed and sized correctly.

Sneak Peek

